



# ChlorFIT<sup>®</sup> Schedule 80 CORZAN<sup>®</sup> CPVC to 316SS Transition Fittings

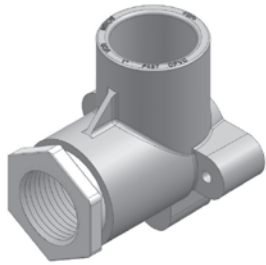
ChlorFIT<sup>®</sup> transition fittings from GF Piping Systems are the ideal solution when a transition to a metal fitting or fixture is required. The fittings transition from ChlorFIT<sup>®</sup> Schedule 80 Corzan<sup>®</sup> CPVC to 316 stainless steel. Unlike other transition fittings which are de-rated, all ChlorFIT transition fittings have a minimum pressure rating of 400 psi at 73°F and 100 psi at 160°F. Sizes range from ½" to 2" and are available in three configurations: male, female and drop ear. The fittings are made in the US and are rigorously tested to US industry standards, providing a robust, trouble-free connection.

## Features and Benefits

- Adapts ChlorFIT<sup>®</sup> Corzan<sup>®</sup> CPVC system to other materials
- Sized in ½" to 2" NPT: Male, Female, and Drop Ear
- Pressure rating: 400 psi at 73°F and 100 psi at 160°F
- 316 Stainless Steel NPT Thread
- Conforms to ASTM 1970, NSF 61, and CSA B137.6
- Easily installed with common tools

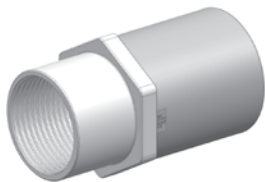
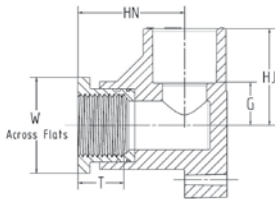
# ChlorFIT<sup>®</sup> Schedule 80 CORZAN<sup>®</sup> CPVC

## CPVC to 316SS Transition Fittings



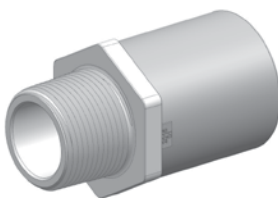
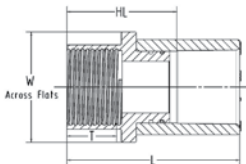
CPVC-to-316SS Drop Ear (SxFPT)

Size (inch)	P/L	Part No.	Pack Qty	G (inch)	HJ (inch)	HN (inch)	T (inch)	W (inch)
½		<b>9832-005SS</b>	5	0.62	1.50	1.52	0.90	1.125
¾		<b>9832-007SS</b>	5	0.76	1.77	1.65	0.95	1.313
1		<b>9832-010SS</b>	5	0.87	2.00	2.20	1.00	1.750



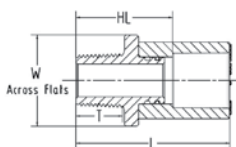
CPVC-to-316SS Female Adapter (SxFPT)

Size (inch)	P/L	Part No.	Pack Qty	HL (inch)	L (inch)	T (inch)	W (inch)
½	A35	<b>9868-005SS</b>	10	1.49	2.38	0.84	1.25
¾	A35	<b>9868-007SS</b>	10	1.67	2.68	0.92	1.50
1	A35	<b>9868-010SS</b>	6	1.98	3.11	0.96	1.75
1 ¼	A35	<b>9868-012SS</b>	5	2.19	3.45	1.04	2.12
1 ½	A35	<b>9868-015SS</b>	5	2.35	3.73	1.04	2.50
2	A35	<b>9868-020SS</b>	4	2.63	4.14	1.29	3.00



CPVC-to-316SS Male Adapter (SxMPT)

Size (inch)	P/L	Part No.	Pack Qty	HL (inch)	L (inch)	T (inch)	W (inch)
½	A35	<b>9869-005SS</b>	10	1.49	2.38	0.70	1.25
¾	A35	<b>9869-007SS</b>	10	1.67	2.68	0.74	1.50
1	A35	<b>9869-010SS</b>	6	1.98	3.11	0.92	1.75
1 ¼	A35	<b>9869-012SS</b>	5	2.19	3.45	0.95	2.12
1 ½	A35	<b>9869-015SS</b>	5	2.35	3.73	0.99	2.50
2	A35	<b>9869-020SS</b>	4	2.64	4.14	1.03	3.00



### GF Piping Systems

9271 Jeronimo Road, Irvine, CA 92618

Tel. (714) 731-8800, Toll Free (800) 854-4090, Fax (800) 426-7188 • e-mail: [us.ps@georgfischer.com](mailto:us.ps@georgfischer.com) • [www.gfpiping.com](http://www.gfpiping.com)

